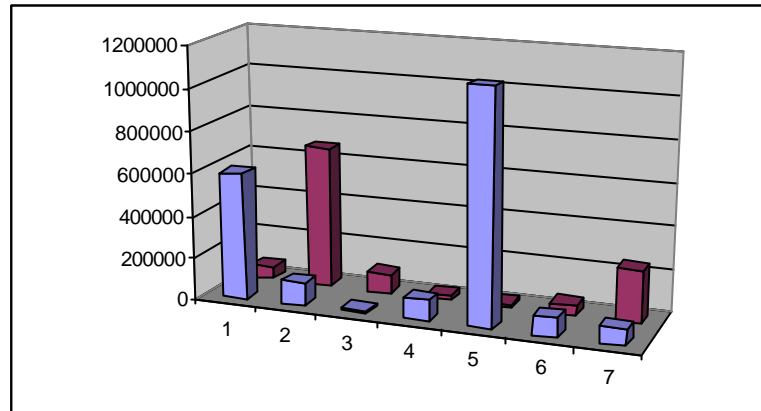




PROJECT SUMMARY

Carbon Footprint and Accounting System Natural England



KEY PROJECT ELEMENTS

- **ESTABLISHING A
BASELINE CARBON
FOOTPRINT**
- **VERIFICATION OF
BASELINE**
- **CARBON
ACCOUNTING
SYSTEM
DEVELOPMENT**
- **DEVELOPING
DATA
COLLECTION
PROCESSES**
- **ESTABLISHING
DATA
VALIDATION
MECHANISMS**
- **GUIDANCE IN
ENERGY AND
EMISSIONS
REDUCTION
OPTIONS**

Natural England, the government agency for biodiversity and sustainable natural environment, has set itself a challenging target to reduce carbon dioxide emissions by 50% by 2010. It also has a target to develop and implement a carbon accounting system, to measure its performance. The first phase of that process involves the quantification of baseline emissions, against which reductions can be measured.

CRA has been appointed to support Natural England in achieving these objectives. Working with the Natural England Estates and Facilities Team, CRA's role includes:

- Guiding the development of a process for accurately capturing the baseline carbon footprint;
- Developing robust data aggregation mechanisms, and applying appropriate carbon emissions factors;
- Providing data validation mechanisms, to ensure reliability and transparency of the process;
- Supporting Natural England during the verification of the footprint emissions data by SGS, to "Level 1";
- Guiding Natural England in the development of a carbon accounting process for capturing future emissions, to provide the basis for tracking performance;
- Contributing to the development of carbon reduction strategies; and
- Providing guidance in relation to effective carbon emissions reduction measures.

CRA's specialist staff look forward to continuing this relationship with Natural England's carbon management team, and to working towards delivery of the emissions reduction target.