



## Air Quality Review and Assessment

The Rogers Review of Local Authority Regulatory Priorities places air quality as one of the five national priorities for local authority enforcement. The UK Air Quality Strategy recognises the role that local authorities fulfil in the improvement of air quality across the UK. It is therefore essential that all local authorities meet their deadlines related to Air Quality Review and Assessment.

### Requirements of Air Quality Review and Assessment

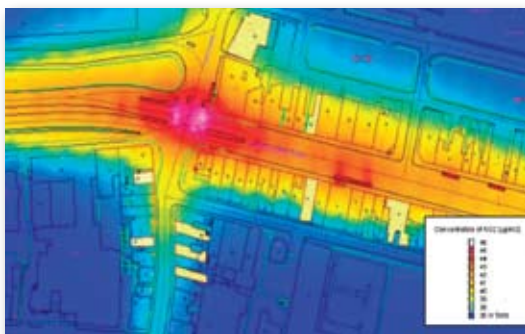
Air Quality Review and Assessment is an ongoing process and is structured in a series of national 'rounds'. The phased approach to the rounds means that an air quality report must be submitted to DEFRA in April of each year.



### How can CRA help Local Authorities?

CRA provides complete air quality services including the preparation of Air Quality Progress Reports, Updating and Screening Assessments, Detailed Assessments, Further Assessments, and Air Quality Action Plans. CRA has hands-on experience in working with local authorities to aid delivery of their Local Air Quality Management (LAQM) requirements and currently provides support to a number of local authorities throughout the UK. In addition, our professional expertise and experience is supported by in-house air dispersion modelling capabilities.

Where local authorities are unable to fulfil their LAQM obligations due to resource constraints, CRA can offer support services and outsourcing so that local authorities can meet their requirements in a cost-effective and reliable manner.



### Air Quality National Indicator 194

In April 2008, new national performance indicators came into force against which all local authorities will be measured. National Indicator 194 requires that local authorities calculate their NO<sub>x</sub> and PM<sub>10</sub> emissions from their estates and operations and set improvement targets for percentage reductions in these emissions.

CRA can work with local authorities to develop baselines for NO<sub>x</sub> and PM<sub>10</sub> emissions to ensure they meet DEFRA's deadline of April 30, 2009. CRA can also support local authorities in developing emission reduction strategies.

The Air Quality National Indicator enables local authorities to lead by example; CRA can assist local authorities in achieving this.

### Company Background

**Conestoga-Rovers & Associates (Europe) Ltd (CRA)** is an independent environmental consulting firm providing specialist services in Industrial Operations Support, and Property, Land, and Environmental Management.

CRA has an excellent working relationship with a significant number of local authorities and industrial clients across the UK.



**CONESTOGA-ROVERS  
& ASSOCIATES (EUROPE) LTD**



## Fax This Form Back To: 0115 965 5282

For further information about CRA's Air Quality Review and Assessment Services, please complete this form and fax it back to us or contact us at the address shown below.

First Name: \_\_\_\_\_

Last Name: \_\_\_\_\_

Job Title: \_\_\_\_\_

Local Authority Name: \_\_\_\_\_

Local Authority Address: \_\_\_\_\_

\_\_\_\_\_

\_\_\_\_\_

Post Code: \_\_\_\_\_

Tel: \_\_\_\_\_

Fax: \_\_\_\_\_

Email: \_\_\_\_\_



### **Conestoga-Rovers & Associates (Europe) Ltd**

Synergy House, Unit 1  
Calverton Business Park  
Hoyle Road, Calverton, Nottingham  
NG14 6QL

**Tel:** 0115 965 6700

**Fax:** 0115 965 5282

**email:** [info@cra.co.uk](mailto:info@cra.co.uk)

**web:** [www.cra.co.uk](http://www.cra.co.uk)

### **Other Services Offered:**

CRA specialises in a number of other business areas. I would like to receive more information about (please select those of interest):

- |   |   |
|---|---|
| <input type="checkbox"/> Brownfield Redevelopment       | <input type="checkbox"/> EP Compliance Auditing |
| <input type="checkbox"/> Carbon Accounting              | <input type="checkbox"/> Investigations         |
| <input type="checkbox"/> Energy and Resource Efficiency | <input type="checkbox"/> Noise Investigations   |
| <input type="checkbox"/> Environmental Permitting (EP)  | <input type="checkbox"/> Outsourcing            |
| <input type="checkbox"/> Environmental Site Assessments | <input type="checkbox"/> Renewable Energy       |
| <input type="checkbox"/> Environmental Training         | <input type="checkbox"/> Technical Reviews      |

2,900+ Staff; 90+ Offices

UK Offices in Liverpool, Nottingham, and Reading

tel: 0115 965 6700 web: [www.cra.co.uk](http://www.cra.co.uk) email: [info@cra.co.uk](mailto:info@cra.co.uk)

WORLDWIDE ENGINEERING, ENVIRONMENTAL, CONSTRUCTION, AND IT SERVICES